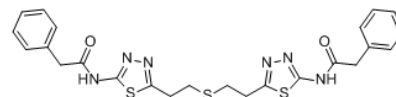


Product Name : BPTES
Cat. No. : PC-43147
CAS No. : 314045-39-1
Molecular Formula : C₂₄H₂₄N₆O₂S₃
Molecular Weight : 524.6813
Target : Glutaminase
Solubility : DMSO: < 41 mg/mL



Biological Activity

BPTES is a potent, selective kidney-type glutaminase 1 (**GLS1**) inhibitor with K_i of 3 μ M (rat KGA), selective for GLS1 over GLS2, glutamate dehydrogenase, and γ -glutamyl transpeptidase.

BPTES inhibits the allosteric activation caused by phosphate binding and promotes the formation of an inactive complex.

BPTES slows growth of glioblastoma cells expressing mutant IDH1 compared with those expressing wild-type IDH1, lowers glutamate and α -KG levels, and increases glycolytic intermediates while leaving total 2-HG levels unaffected.

BPTES nanoparticles significantly reduces pancreatic tumor combined with metformin in vivo.

References

- Robinson MM, et al. *Biochem J.* 2007 Sep 15;406(3):407-14.
- Seltzer MJ, et al. *Cancer Res.* 2010 Nov 15;70(22):8981-7.
- Elgogary A, et al. *Proc Natl Acad Sci U S A.* 2016 Sep 6;113(36):E5328-36.
- Shukla K, et al. *J Med Chem.* 2012 Dec 13;55(23):10551-63.

Caution: Product has not been fully validated for medical applications. Lab Use Only!

E-mail: tech@probechem.com